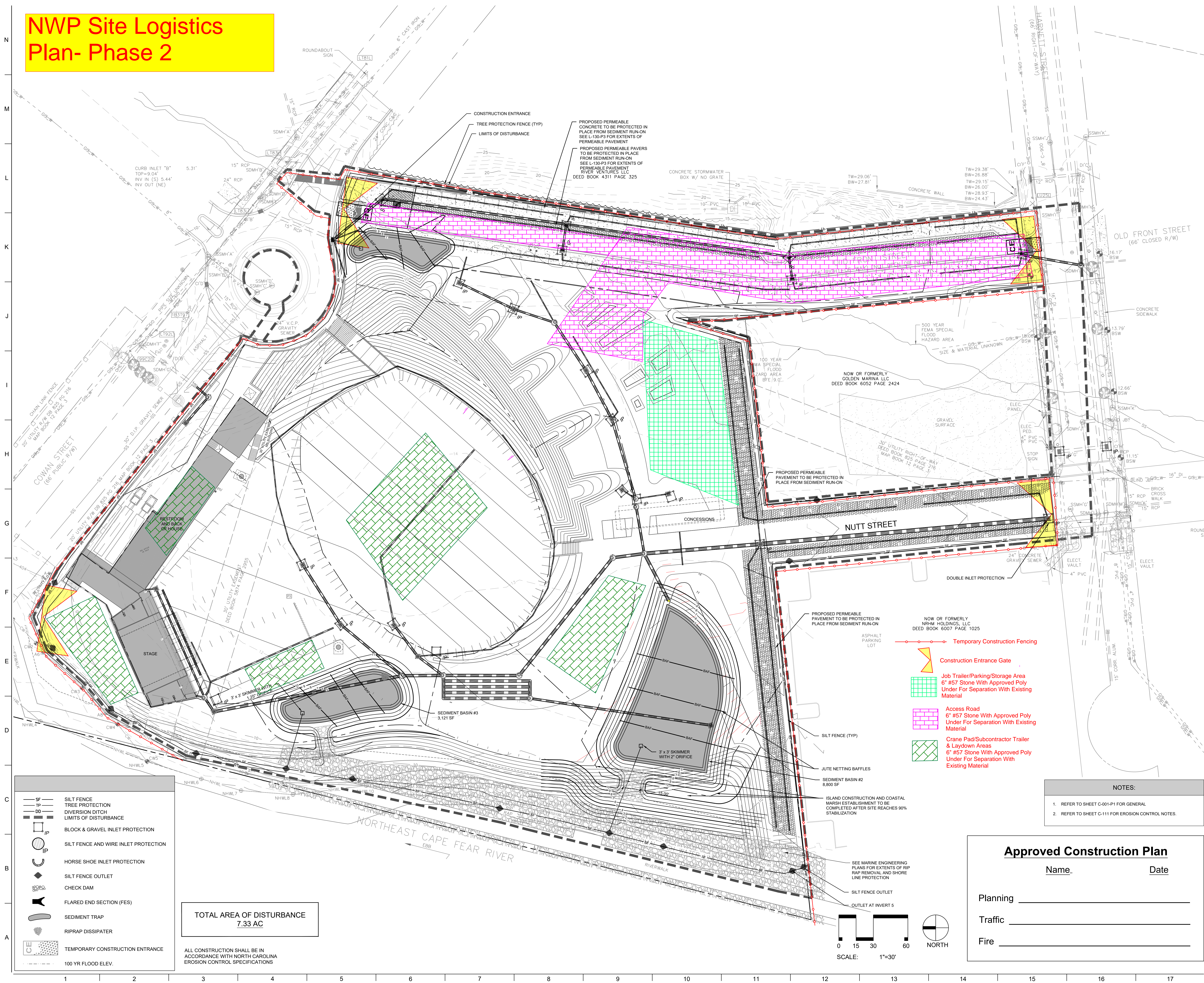


NWP Site Logistics Plan- Phase 2



PROJECT INFORMATION

**NORTH
WATERFRONT
PARK**

WILMINGTON, NORTH CAROLINA

CITY OF WILMINGTON
Community Services Department
PO Box 1810, Wilmington, North Carolina 28402

Landscape Architecture = L
HARGREAVES JONES
180 Varick Street, Suite 204, New York, NY 10014
www.hargreavesjonesla.com
NC License #C-513

Architecture = A
SAGE & COOMBE ARCHITECTS
 12-16 Vestry Street, 5th Floor, New York, NY 10013
www.sageandcoombe.com

Acoustic/Theater/AV = AT
OAP.P.C.
 77 Water Street, New York NY 10015
www.arup.com

Civil Engineering = C
Structural Engineering= S
Geotechnical Engineering = G
STEWART
223 S. West Street, Suite 1100, Raleigh, NC 27603
www.stewartinc.com
NC License #C-1051

Environmental Engineering = EE
SOIL & ENVIRONMENTAL CONSULTANTS, PA
 8412 Falls of Neuse Road, Suite 104, Raleigh, NC 27615
www.sandec.com
EAGLE RESOURCES
 215 West Moore Street, Southport, NC 28461
www.eagleresources.com

Irrigation= I
CLARK IRRIGATION DESIGN & CONSULTING, INC
 P.O. Box 693, Lavonia, GA 30553
www.clarkirrigationdesign.com

Landscape Soil = LS
LANDIS, PLLC
 3908 Bentley Brook Dr. Raleigh, NC 27612
www.landispllc.com

Mechanical Engineering = M
Electrical Engineering = E
Plumbing Engineering = P
Fire Protection = FP

CHEATHAM & ASSOCIATES, PA
3412 Enterprise Drive, Wilmington NC 28405
www.cheathampa.com
NC License #C-1073

Marine Structural Engineering = SM
ANDREW CONSULTING ENGINEERS
 3811 Peachtree Avenue, Suite 300, Wilmington, NC 28403
www.andrewengineers.com

Water Fountain Design = WF
DELTA FOUNTAINS
 11494 Columbia Park Dr. W., Suite 4, Jacksonville, FL32258
www.deltafountains.com

Wayfinding = XS
TWO TWELVE
 236 W 27th Street, Suite 802, New York NY 10001
www.twotwelve.com

Lighting Design = EL
TILLOTSON DESIGN ASSOCIATES
 40 Worth Street, Room 703, New York NY 10013
www.tillotsondesign.com

SEAL/SIGNATURE

STH CAROL



FOR REVIEW ONLY
NOT FOR CONSTRUCTION

NOT FOR CONSTRUCTION

ISSUE/REVISIONS

NO.	DESCRIPTION	DATE
1	SCHEMATIC DESIGN	03/09/2018
2	DESIGN DEVELOPMENT	07/13/2018
3	95% CONSTRUCTION DOCUMENTS	03/08/2019

KEY MAP

A technical drawing of a tunnel cross-section. A train is shown on the right side of the tunnel, and a person is standing on the left side, looking towards the train. The drawing is a line drawing with some shading to indicate depth.

SHEET INFORMATION

Project No.: NWP 1701
Drawn By: NBC

Checked By: JWP
Date: 03/08/2019
Scale: 1" = 30'

SHEET TITLE

CIVIL EROSION & SEDIMENTATION

SEDIMENTATION (PHASE II)

SHEET NO. _____

C-113-P1
